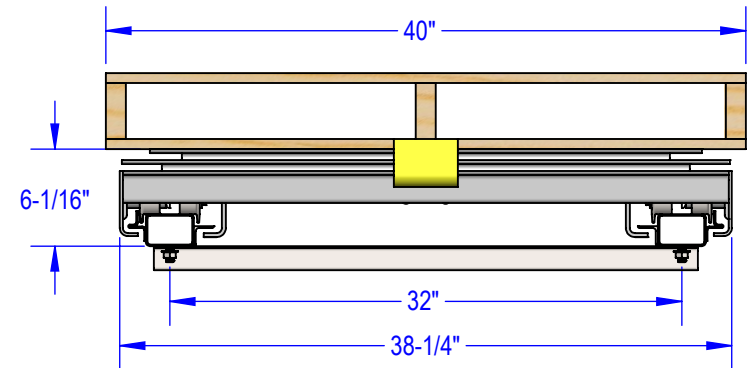


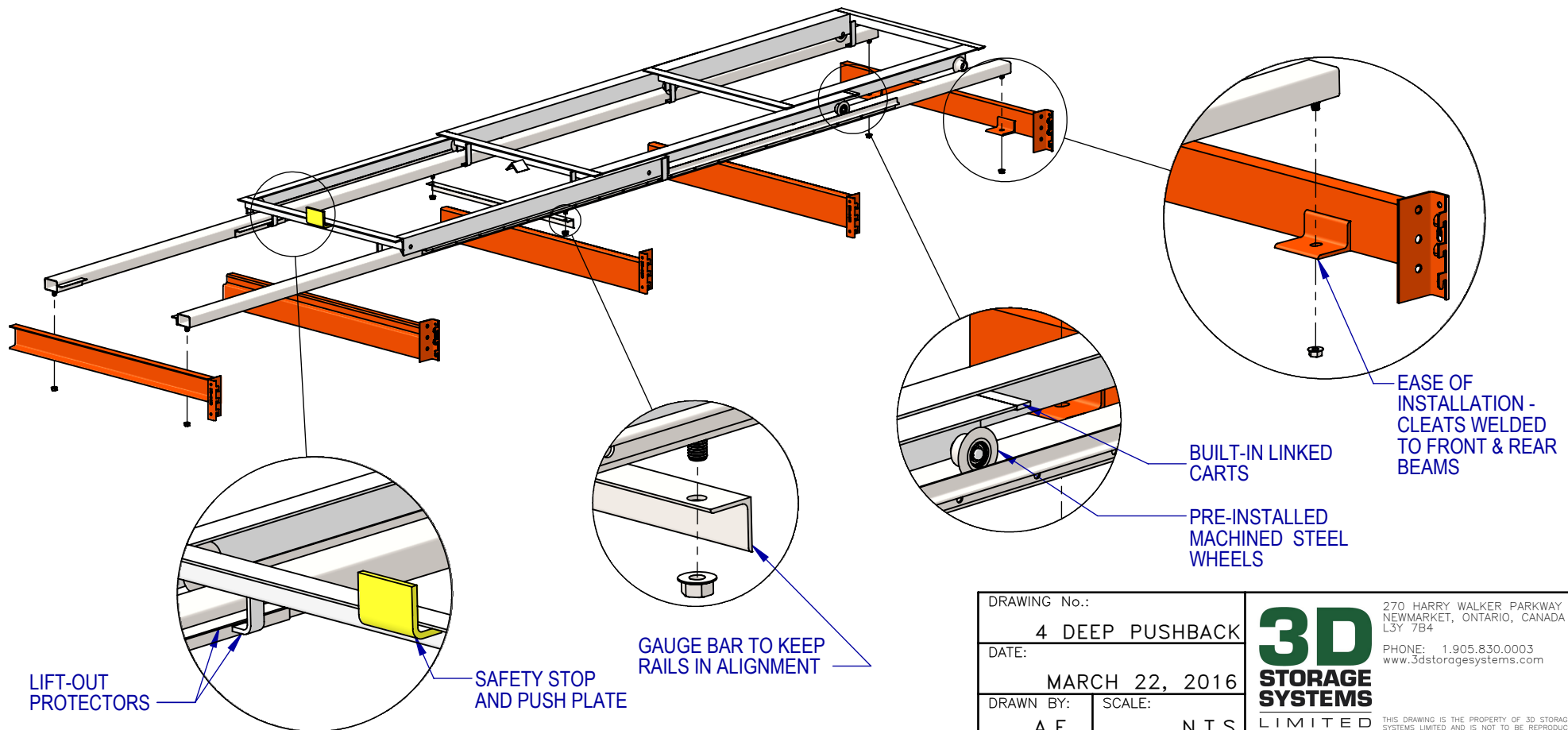
FEATURES AND BENEFITS:

- PUSHBACK HAS THE LOWEST PROFILE HEIGHT ON THE MARKET.
- HEAVY DUTY STRUCTURAL STEEL CONSTRUCTION WITH SUPERIOR IMPACT RESISTANCE IS BUILT TO HANDLE 3,000 LB LOADS.
- CARTS HAVE INTEGRATED CRITICAL SAFETY FEATURES: LIFT-OUT PROTECTION, LINKED CARTS, AND SAFETY STOPS.
- STRUCTURAL TUBE RAILS OFFER A SMOOTH ROLLING SURFACE AND ONLY REQUIRE ATTACHMENT AT FRONT & REAR, NO ATTACHMENT TO INTERNAL BEAMS IS REQUIRED.
- MACHINED STEEL WHEELS WITH PRECISION BEARINGS ON WELDED STEEL SHAFTS.
- CARTS COME FULLY ASSEMBLED - NO NEED TO BOLT WHEELS TO CARTS.
- EASY TRANSPORTATION, EASY INSTALLATION AND EASY TO USE.
- DURABLE POWDER COATED FINISH, AVAILABLE IN GREY, BLUE OR GREEN.
- CUSTOM COLOURS OR HOT DIP GALVANISED FINISH AVAILABLE UPON REQUEST.

4 DEEP LOW PROFILE STEADIFLO PUSHBACK (for a typical 40" wide x 48" deep GMA/CHEP style pallet) PART NO. PB44048-STN



PROFILE



DRAWING No.:	
4 DEEP PUSHBACK	
DATE:	
MARCH 22, 2016	
DRAWN BY:	SCALE:
A.F.	N.T.S.

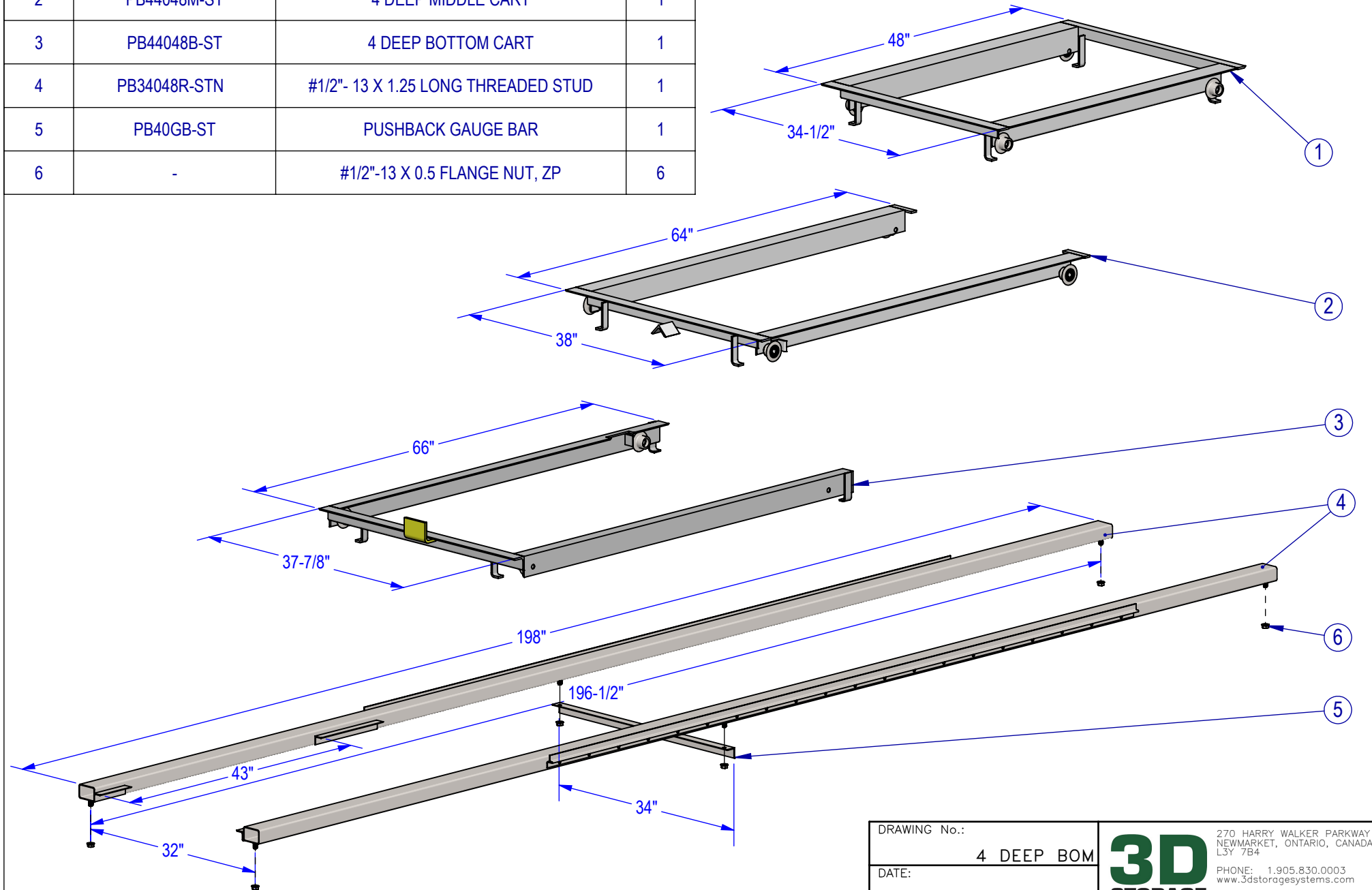
3D
STORAGE
SYSTEMS
LIMITED

270 HARRY WALKER PARKWAY N.
NEWMARKET, ONTARIO, CANADA
L3Y 7B4

PHONE: 1.905.830.0003
www.3dstoragesystems.com

THIS DRAWING IS THE PROPERTY OF 3D STORAGE SYSTEMS LIMITED AND IS NOT TO BE REPRODUCED IN ANY FORM WITHOUT WRITTEN CONSENT.

ITEM NO.	PART NUMBER	DESCRIPTION	QTY.
1	PB44048T-STN	4 DEEP TOP CART	1
2	PB44048M-ST	4 DEEP MIDDLE CART	1
3	PB44048B-ST	4 DEEP BOTTOM CART	1
4	PB34048R-STN	#1/2"- 13 X 1.25 LONG THREADED STUD	1
5	PB40GB-ST	PUSHBACK GAUGE BAR	1
6	-	#1/2"-13 X 0.5 FLANGE NUT, ZP	6



COMPONENT DIMENSIONS FOR STANDARD 4 DEEP PUSHBACK LANE.

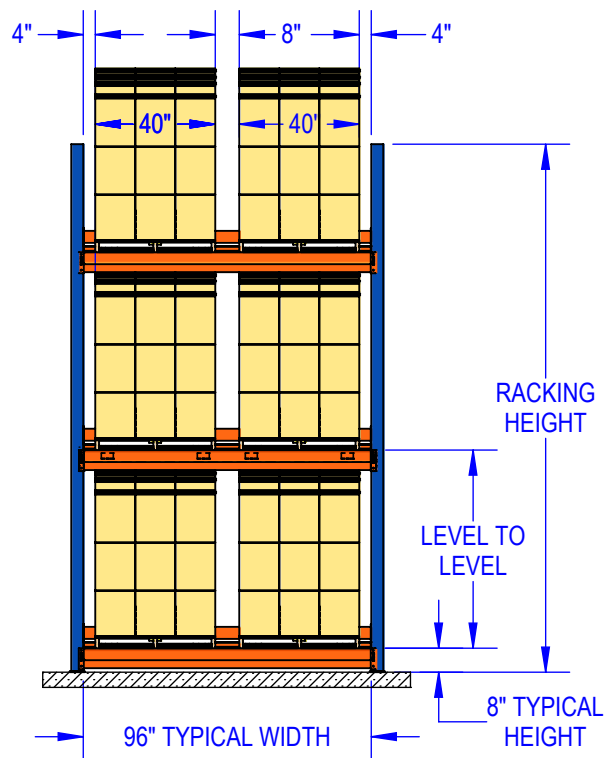
DRAWING No.: 4 DEEP BOM	
DATE: MARCH 22, 2016	
DRAWN BY: A.F.	SCALE: N.T.S.

3D
STORAGE
SYSTEMS
LIMITED

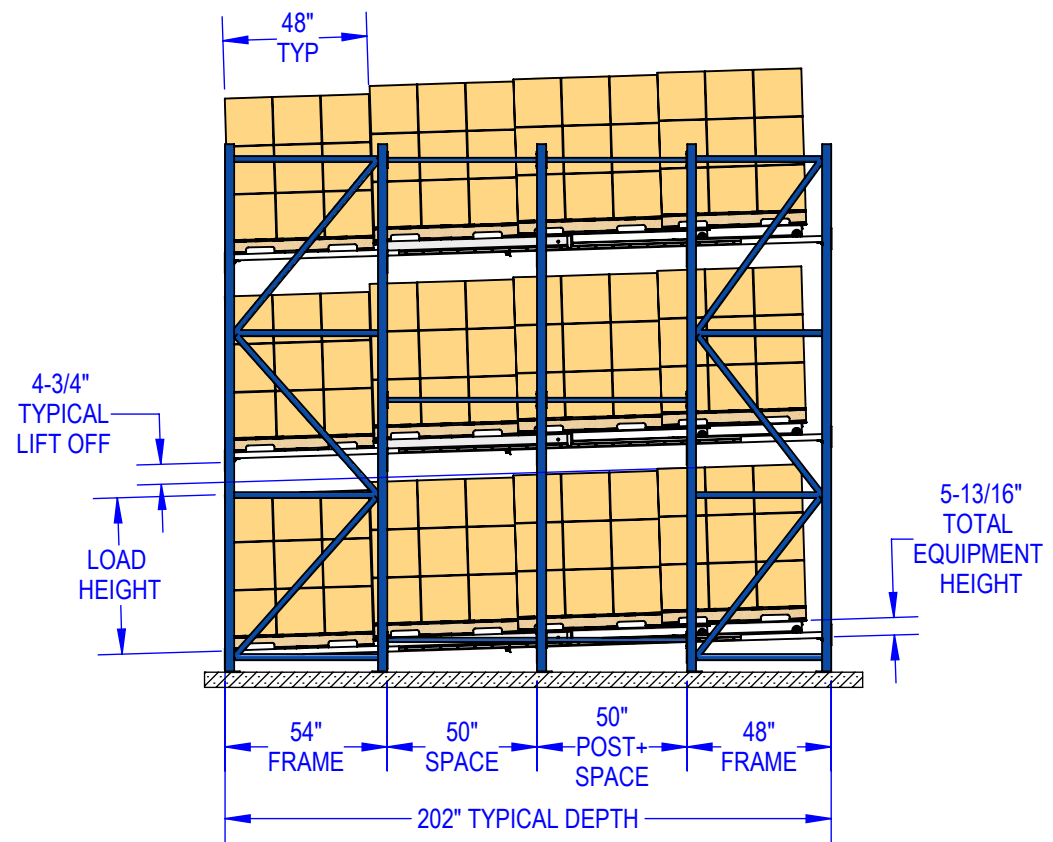
270 HARRY WALKER PARKWAY N.
NEWMARKET, ONTARIO, CANADA
L3Y 7B4

PHONE: 1.905.830.0003
www.3dstoragesystems.com

THIS DRAWING IS THE PROPERTY OF 3D STORAGE SYSTEMS LIMITED AND IS NOT TO BE REPRODUCED IN ANY FORM WITHOUT WRITTEN CONSENT.



FRONT VIEW



SIDE VIEW



TYPICAL DOUBLE WIDE 3-LEVEL HIGH BAY OF 4 DEEP PUSHBACK LANES FOR STANDARD 40" WIDE X 48" DEEP GMA/CHEP STYLE PALLET:

- LEVEL TO LEVEL DISTANCE = LOAD HEIGHT + INTERNAL BEAM HEIGHT + 5-13/16" + 1"
- RECOMMENDED RACKING HEIGHT = FRONT BEAM HEIGHT + LEVEL TO LEVEL DISTANCE x NUMBER OF LEVELS + LOAD HEIGHT / 2
- RECOMMENDED SLOP = 3/8" DROP PER FOOT.
- CENTER TO CENTER DISTANCE FOR RAIL STUDS: 32" SIDE TO SIDE & 196-1/2" FRONT TO BACK.

DRAWING No.:	
4 DEEP ELEVATION	
DATE:	
MARCH 22, 2016	
DRAWN BY:	SCALE:
A.F.	N.T.S.

3D
STORAGE
SYSTEMS
LIMITED

270 HARRY WALKER PARKWAY N.
NEWMARKET, ONTARIO, CANADA
L3Y 7B4

PHONE: 1.905.830.0003
www.3dstoragesystems.com

THIS DRAWING IS THE PROPERTY OF 3D STORAGE SYSTEMS LIMITED AND IS NOT TO BE REPRODUCED IN ANY FORM WITHOUT WRITTEN CONSENT.