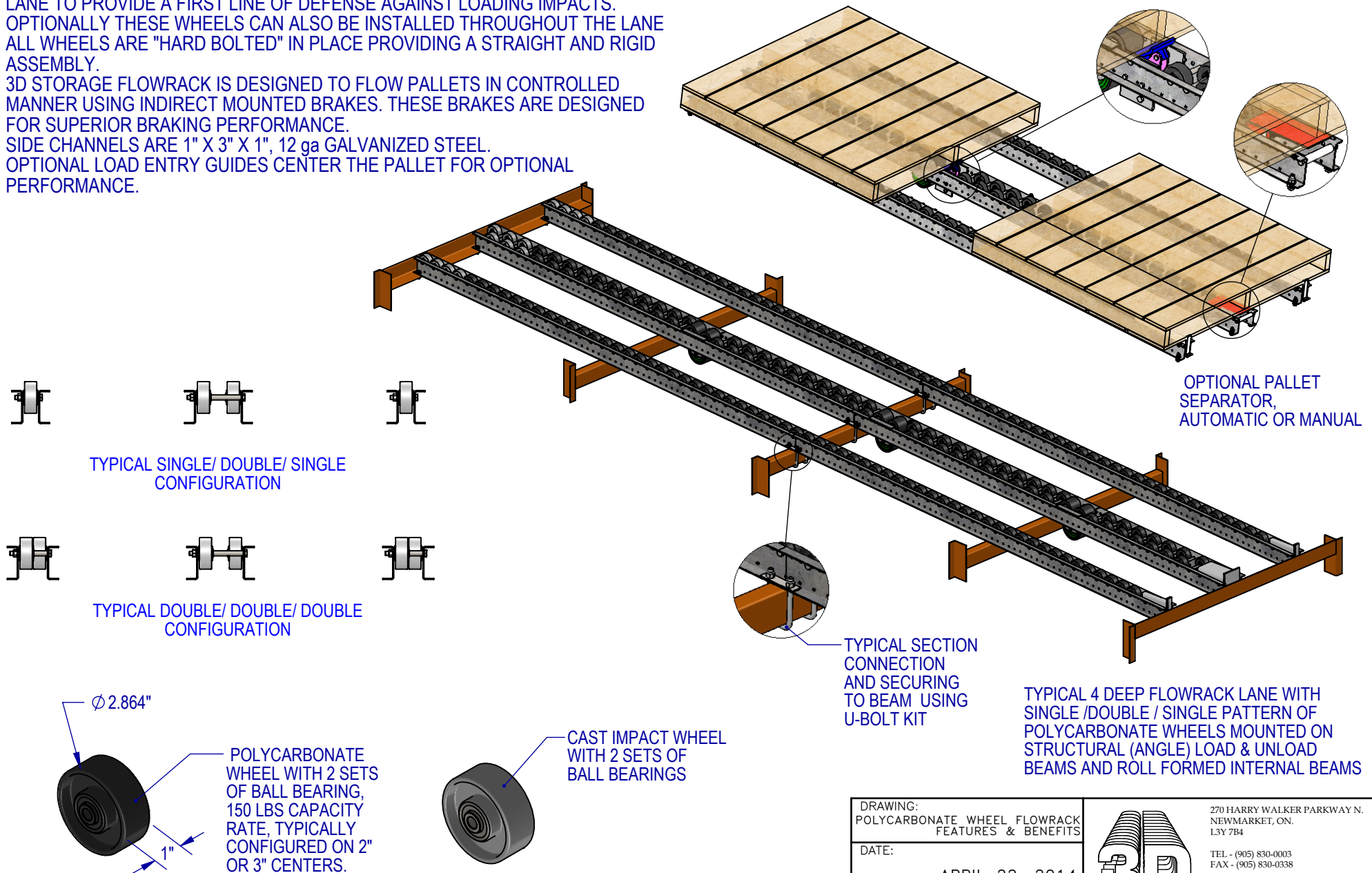


## FEATURES AND BENEFITS:

- TOP PERFORMANCE FLOWRACK SYSTEM FOR DEEP LANE FLOW APPLICATIONS (UP TO 26 PALLET).
- SPECIFICALLY FORMULATED POLYCARBONATE BLEND SUITED FOR A WIDE TEMPERATURE RANGE AND IMPACT RESISTANCE.
- STEEL IMPACT WHEELS ARE TYPICALLY INSTALLED IN THE FIRST 12" OF EACH LANE TO PROVIDE A FIRST LINE OF DEFENSE AGAINST LOADING IMPACTS. OPTIONALLY THESE WHEELS CAN ALSO BE INSTALLED THROUGHOUT THE LANE.
- ALL WHEELS ARE "HARD BOLTED" IN PLACE PROVIDING A STRAIGHT AND RIGID ASSEMBLY.
- 3D STORAGE FLOWRACK IS DESIGNED TO FLOW PALLETS IN CONTROLLED MANNER USING INDIRECT MOUNTED BRAKES. THESE BRAKES ARE DESIGNED FOR SUPERIOR BRAKING PERFORMANCE.
- SIDE CHANNELS ARE 1" X 3" X 1", 12 ga GALVANIZED STEEL.
- OPTIONAL LOAD ENTRY GUIDES CENTER THE PALLET FOR OPTIONAL PERFORMANCE.

## POLYCARBONATE WHEEL PALLET FLOWRACK



DRAWING:  
POLYCARBONATE WHEEL FLOWRACK  
FEATURES & BENEFITS

DATE:

APRIL 22, 2014

DRAWN BY:

A.F.

SCALE:

N.T.S.

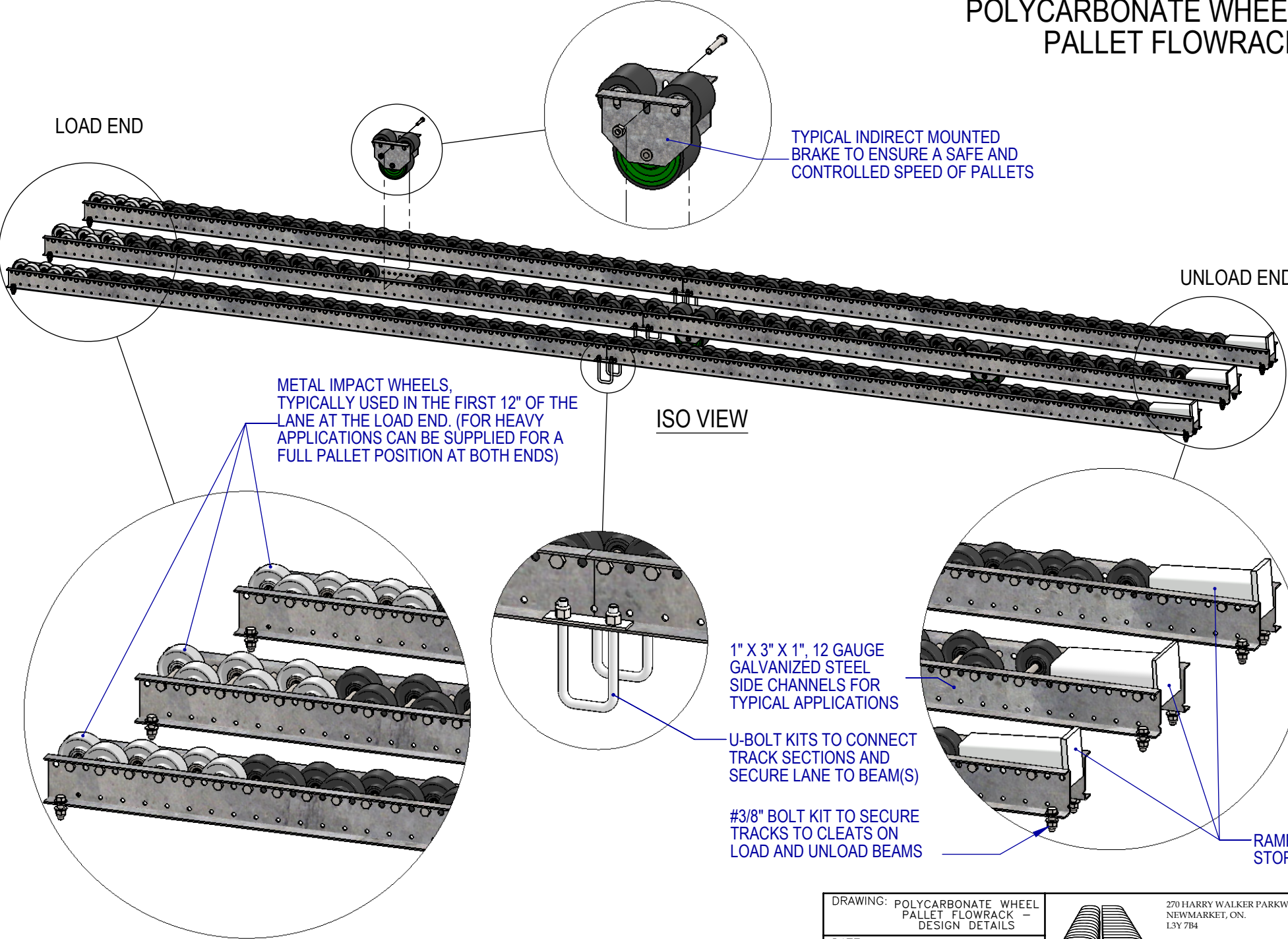


270 HARRY WALKER PARKWAY N.  
NEWMARKET, ON.  
L3Y 7B4

TEL - (905) 830-0003  
FAX - (905) 830-0338

THIS DRAWING IS THE PROPERTY OF  
3D STORAGE SYSTEMS LIMITED AND  
IS NOT TO BE REPRODUCED IN ANY  
FORM WITHOUT WRITTEN CONSENT

POLYCARBONATE WHEEL  
PALLET FLOWRACK

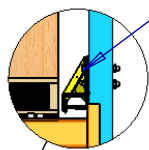


TYPICAL 4 DEEP FLOWRACK LANE WITH DOUBLE /DOUBLE / DOUBLE PATTERN  
OF POLYCARBONATE WHEELS - DESIGN DETAILS.

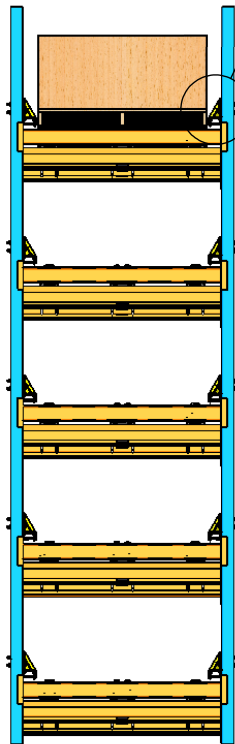
DRAWING: POLYCARBONATE WHEEL PALLET FLOWRACK - DESIGN DETAILS	
DATE: APRIL 22, 2014	
DRAWN BY: A.F.	SCALE: N.T.S.



270 HARRY WALKER PARKWAY N.  
NEWMARKET, ON.  
L3Y 7B4  
TEL - (905) 830-0003  
FAX - (905) 830-0338  
  
THIS DRAWING IS THE PROPERTY OF  
3D STORAGE SYSTEMS LIMITED AND  
IS NOT TO BE REPRODUCED IN ANY  
FORM WITHOUT WRITTEN CONSENT



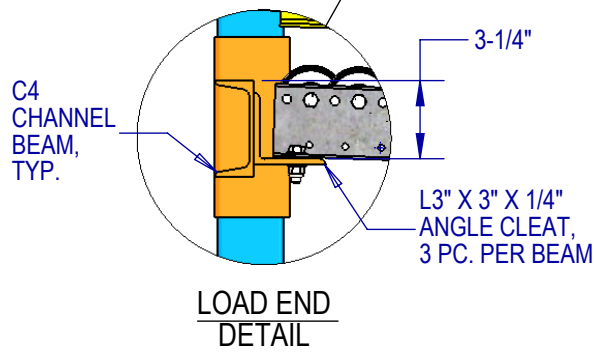
RECOMMENDED LOAD ENTRY GUIDE  
FOR MOST FLOWRACK SYSTEMS  
5 OR MORE PALLETS DEEP



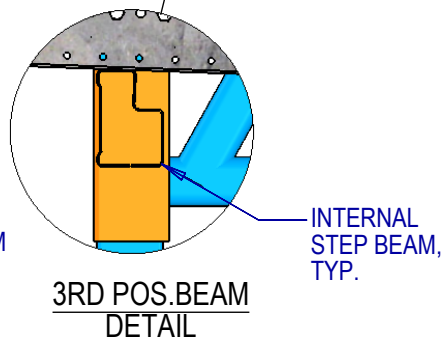
FRONT VIEW



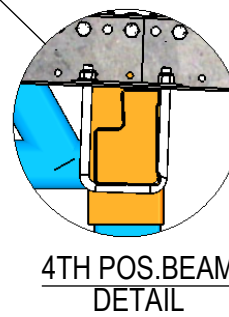
SIDE VIEW



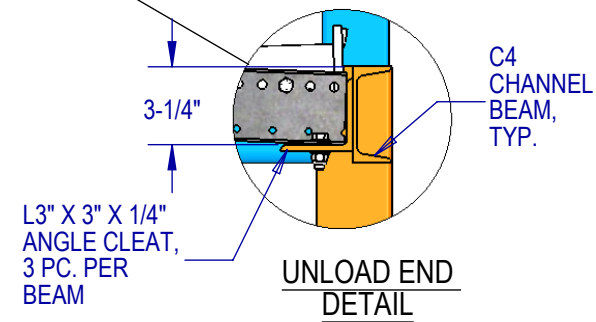
LOAD END  
DETAIL



3RD POS.BEAM  
DETAIL



4TH POS.BEAM  
DETAIL



UNLOAD END  
DETAIL

TYPICAL SINGLE WIDE BAY OF 5 DEEP FLOWRACK LANES, 5 LEVELS HIGH - INSTALLATION DETAILS.

DRAWING: PALLET FLOW TYPICAL INSTALLATION	
DATE: APRIL 22, 2014	
DRAWN BY: A.F.	SCALE: N.T.S.



270 HARRY WALKER PARKWAY N.  
NEWMARKET, ON.  
L3Y 7B4

TEL - (905) 830-0003  
FAX - (905) 830-0338

THIS DRAWING IS THE PROPERTY OF  
3D STORAGE SYSTEMS LIMITED AND  
IS NOT TO BE REPRODUCED IN ANY  
FORM WITHOUT WRITTEN CONSENT