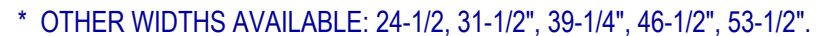



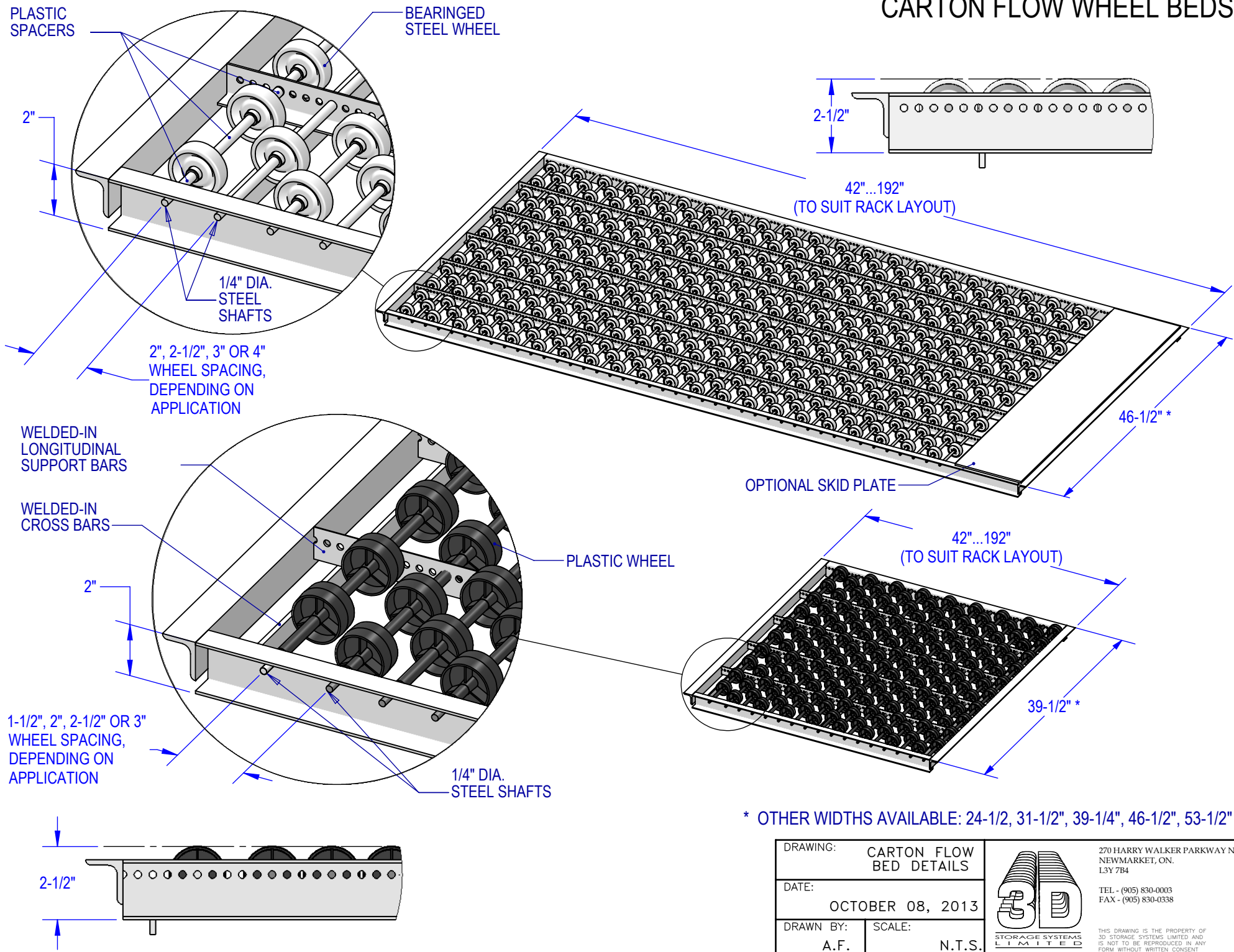
- SUPERIOR ABUSE RESISTANCE, VIRTUALLY IMPOSSIBLE TO DAMAGE
- CARTON SIZE AND WEIGHT FLEXIBILITY, ELIMINATES THE NEED TO RE-PROFILE
- SMOOTH FLOWING BALL BEARING STEEL WHEELS MEANS LESS SLOPE REQUIRED
- OPTIONAL PLASTIC WHEELS AVAILABLE FOR LIGHTER PRODUCTS
- WELDED ONE PIECE FRAME, POWDER COATED TOUGH FOR LONG LASTING LIFE
- HIGHLY DURABLE 1/4" DIAMETER STEEL SHAFTS PROVIDES IMPACT RESISTANCE
- FULL WIDTH SHAFTS WITH INTERMEDIATE SUPPORT ANGLES
- AN IMPRESSIVE OVERALL LOAD RATING OF 50 LB. PER SQUARE FOOT
- HEAVY DUTY WIRE DIVIDERS AID IN PRODUCT SEPARATION AND FLOW CONTROL

* BEDS BUILT TO SUIT RACK LAYOUT.
LENGTHS AVAILABLE FROM 42" TO 192".



DRAWING: CARTON FLOW – FEATURES & BENEFITS		 <p style="margin: 0;">3D STORAGE SYSTEMS LIMITED</p>	270 HARRY WALKER PARKWAY N. NEWMARKET, ON. L3Y 7B4
DATE: OCTOBER 08, 2013			TEL - (905) 830-0003 FAX - (905) 830-0338
DRAWN BY: A.F.	SCALE: N.T.S.	THIS DRAWING IS THE PROPERTY OF 3D STORAGE SYSTEMS LIMITED AND IS NOT TO BE REPRODUCED IN ANY FORM WITHOUT WRITTEN CONSENT	

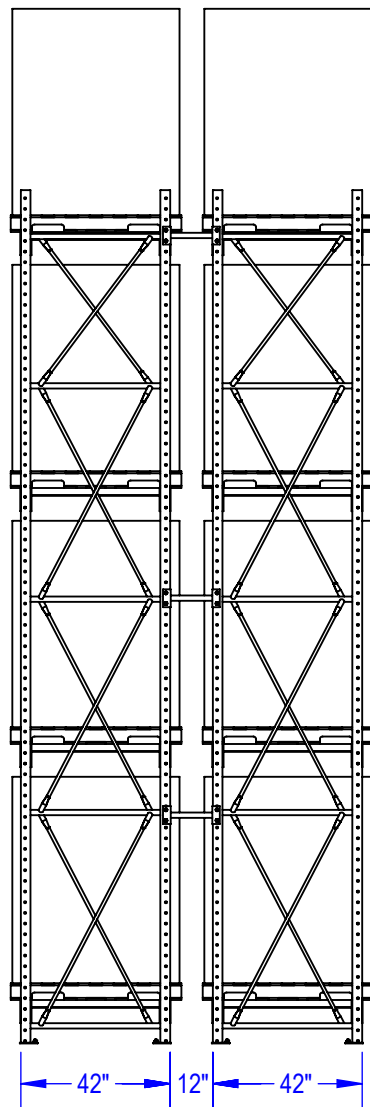
CARTON FLOW WHEEL BEDS



DRAWING: CARTON FLOW BED DETAILS	
DATE: OCTOBER 08, 2013	
DRAWN BY: A.F.	SCALE: N.T.S.

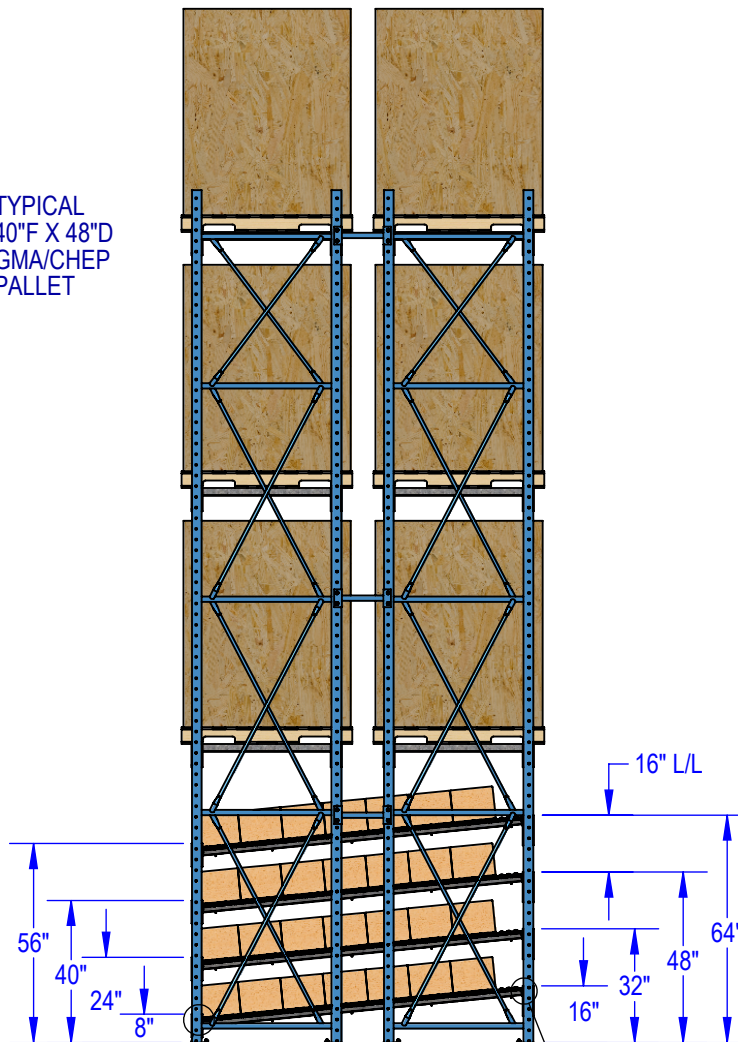


270 HARRY WALKER PARKWAY N.
NEWMARKET, ON.
L3Y 7B4
TEL - (905) 830-0003
FAX - (905) 830-0338
THIS DRAWING IS THE PROPERTY OF
3D STORAGE SYSTEMS LIMITED AND
IS NOT TO BE REPRODUCED IN ANY
FORM WITHOUT WRITTEN CONSENT



SIDE VIEW
STANDARD SELECTIVE
PALLET STORAGE

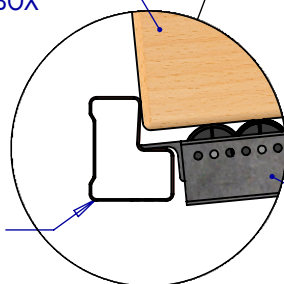
TYPICAL
40" F X 48" D
GMA/CHEP
PALLET



SIDE VIEW
CARTON FLOW +
SELECTIVE
PALLET STORAGE

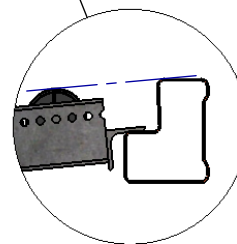
CARTON
BOX

TYPICAL
STEP BEAM



UNLOAD END
DETAIL

WELDED
BED FRAME



LOAD END
DETAIL



DRAWING: CARTON FLOW –
TYPICAL CONVERSION

DATE:
OCTOBER 08, 2013

DRAWN BY: A.F. SCALE: N.T.S.



270 HARRY WALKER PARKWAY N.
NEWMARKET, ON.
L3Y 7B4

TEL - (905) 830-0003
FAX - (905) 830-0338

THIS DRAWING IS THE PROPERTY OF
3D STORAGE SYSTEMS LIMITED AND
IS NOT TO BE REPRODUCED IN ANY
FORM WITHOUT WRITTEN CONSENT