

CARTON FLOW



HEAVY DUTY CARTON FLOW

3D Storage Systems offers a heavy duty carton flow to suit a multitude of uses. Skatewheel beds are ideal for heavy duty case and carton flow applications. Frames are welded from 12 gauge material and are built to withstand impact from cases of hardware, batteries etc. These can be configured to reduce pick paths, enhance first-in first-out, increase pick slot locations, and offer enhanced picking efficiencies.

FEATURES & BENEFITS

- 'Bed' design allows flexibility in box size and weight and still provides the ability to maximize the use of the entire shelf. "No fixed roller width", all wheels roll independently allowing infinite flexibility and superior flow of product to the pick aisle.
- Both plastic and bearinged steel wheels are available to suit any load requirement.
- Plastic wheels typically range to 35 lbs. per sq. foot.
- Steel wheels allow weight ranges up to 50 lbs. per sq. foot. Bearing wheels typically allow for smoother flow at a lower slope. Steel skatewheels have 20 gauge shells.
- Steel shafts that run the width of the bed give the system added impact resistance and weight capacity.
- Welded one piece bed frame with a durable powder coated finish for a lifetime of use.
- The ability to add impact plates, tilt shelf and nose-over shelves add additional flexibility to
- Optional snap-in wire dividers allow for product separation while maintaining flexibility in width. Dividers can adjust with just one hand and can snap in virtually anywhere on the bed.

WE CUSTOM DESIGN EACH APPLICATION TO SUIT THE NEEDS OF EACH AND EVERY FACILITY.

- Custom wheel centers ranging from 1½" to 6" center to center in ½" increments
- Custom lengths and widths to suit new or existing rack types.
- Beds are available with a variety of mounting styles, for use with angle, channel or step beams.

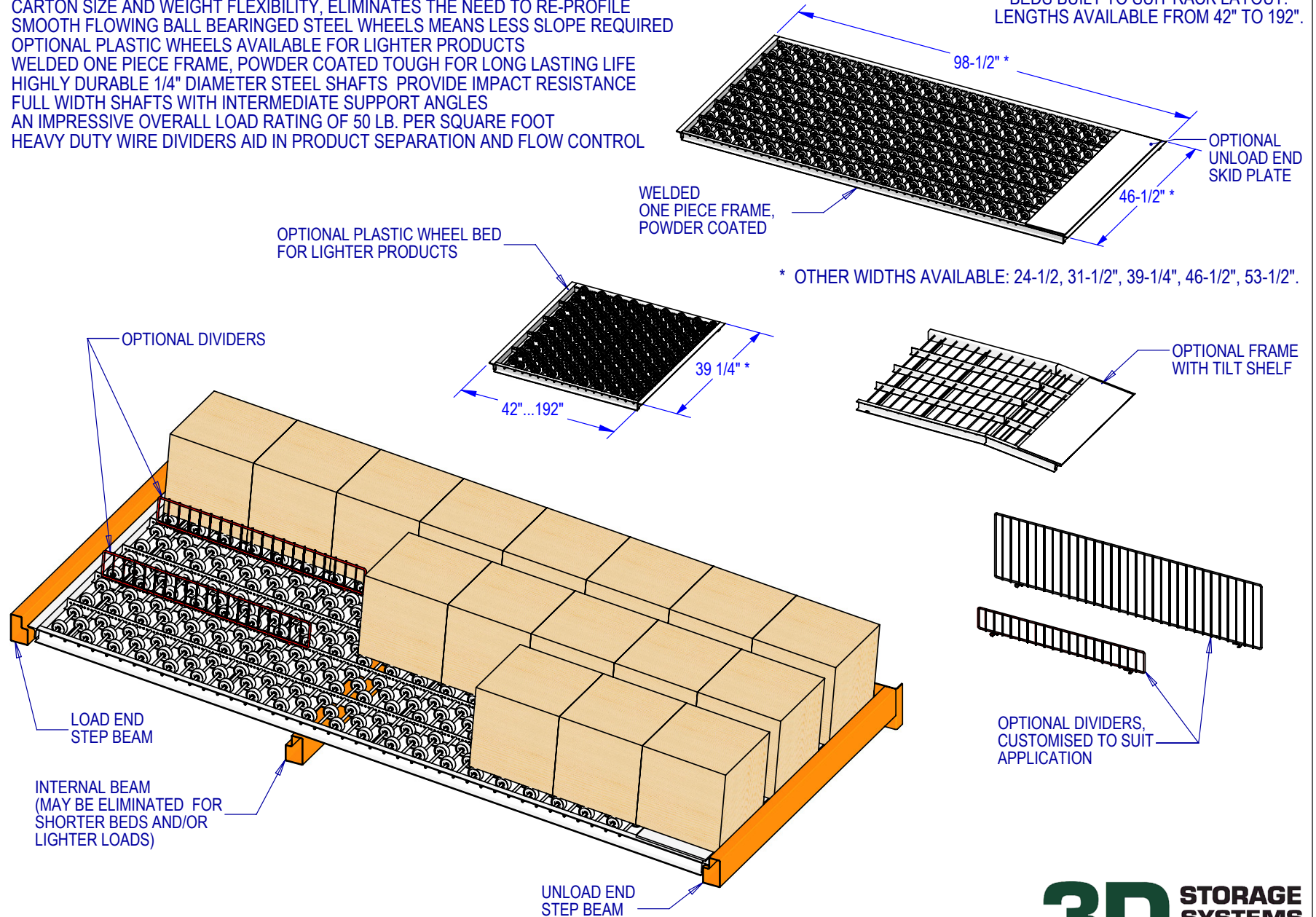


FEATURES AND BENEFITS:

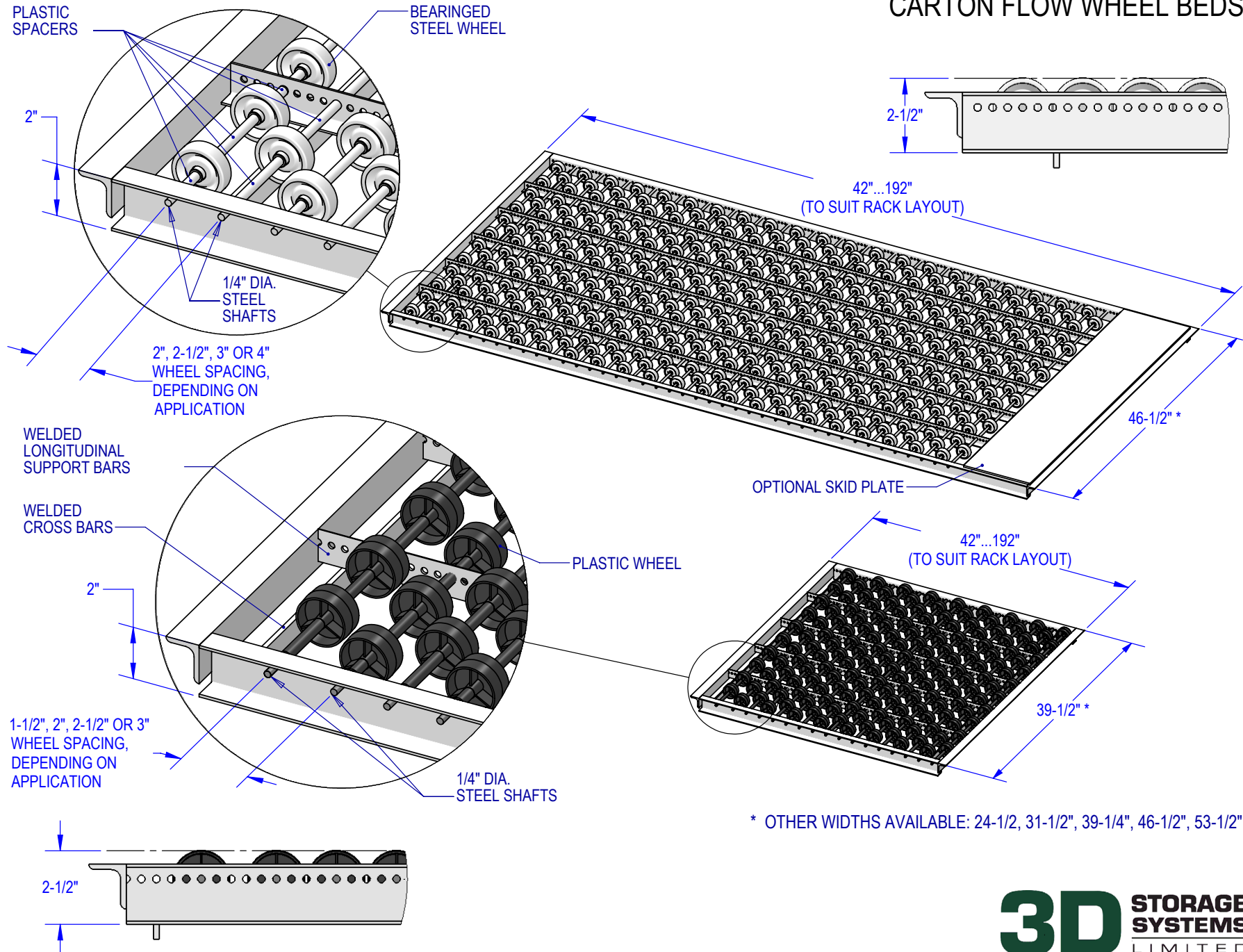
- SUPERIOR ABUSE RESISTANCE, VIRTUALLY IMPOSSIBLE TO DAMAGE
- CARTON SIZE AND WEIGHT FLEXIBILITY, ELIMINATES THE NEED TO RE-PROFILE
- SMOOTH FLOWING BALL BEARING STEEL WHEELS MEANS LESS SLOPE REQUIRED
- OPTIONAL PLASTIC WHEELS AVAILABLE FOR LIGHTER PRODUCTS
- WELDED ONE PIECE FRAME, POWDER COATED TOUGH FOR LONG LASTING LIFE
- HIGHLY DURABLE 1/4" DIAMETER STEEL SHAFTS PROVIDE IMPACT RESISTANCE
- FULL WIDTH SHAFTS WITH INTERMEDIATE SUPPORT ANGLES
- AN IMPRESSIVE OVERALL LOAD RATING OF 50 LB. PER SQUARE FOOT
- HEAVY DUTY WIRE DIVIDERS AID IN PRODUCT SEPARATION AND FLOW CONTROL

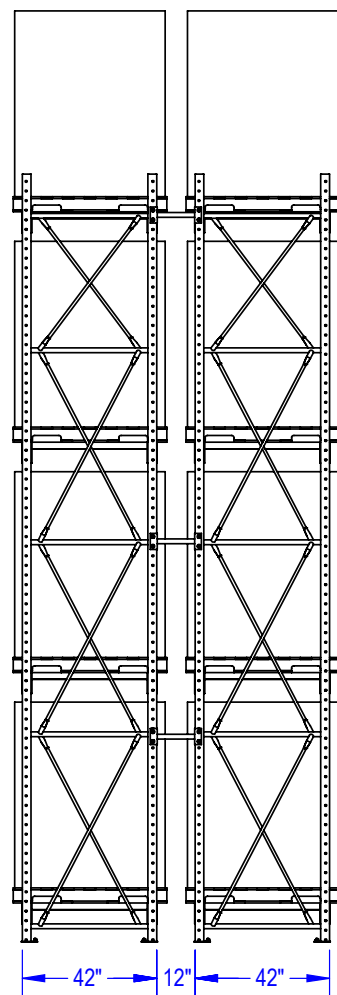
CARTON FLOW WHEEL BEDS

* BEDS BUILT TO SUIT RACK LAYOUT.
LENGTHS AVAILABLE FROM 42" TO 192".



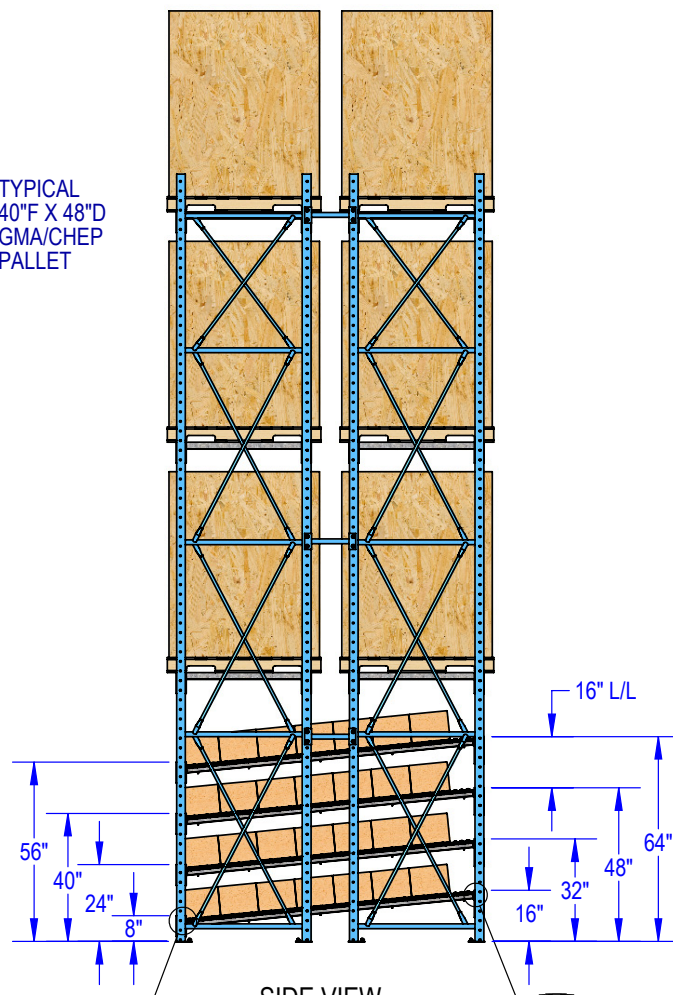
CARTON FLOW WHEEL BEDS





SIDE VIEW
STANDARD SELECTIVE
PALLET STORAGE

TYPICAL
40" F X 48" D
GMA/CHEP
PALLET



SIDE VIEW
CARTON FLOW +
SELECTIVE
PALLET
STORAGE

CARTON
BOX

TYPICAL
STEP BEAM

WELDED
BED FRAME

LOAD END
DETAIL

UNLOAD END
DETAIL

