

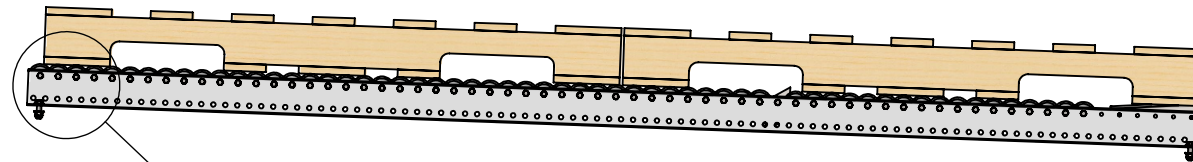
FEATURES AND BENEFITS:

- DURABLE AND INEXPENSIVE SOLUTION FOR 2 OR 3 DEEP PICKING SYSTEMS.
- AN IMPRESSIVE OVERALL LOAD RATING OF 150 LBS.PER WHEEL.
- USUALLY USE TWO DOUBLE STAGGERED RUNS OF WHEELS ON 1.5" CENTERS - WORKS WELL WITH MOST STANDARD GMA/CHEP STYLE PALLET UP TO 2,500 POUNDS.
- THREE DOUBLE STAGGERED RUNS OF WHEELS ON 1.5" CENTERS - FOR HEAVIER GMA/CHEP STYLE PALLET.
- CONFIGURATION WITH SINGLE ROW OR WHEELS IN 2" CENTERS IS ALSO AVAILABLE FOR SPECIAL APPLICATIONS.
- RAMP STOPS CONSTRUCTED FROM STRUCTURAL STEEL TO WITHSTAND IMPACT OF HEAVY PALLETS; INCORPORATE A VERTICAL STOP FOR OPERATOR AND PEDESTRIAN SAFETY;
- ANTI-ROLLBACK DEVICE PROVIDED AS STANDARD EQUIPMENT; CONSTRUCTED FROM STRUCTURAL STEEL FOR LONG LIFE.
- SIDE CHANNELS ARE 1" X 3" X 1", 12 GA. GALVANIZED STEEL.

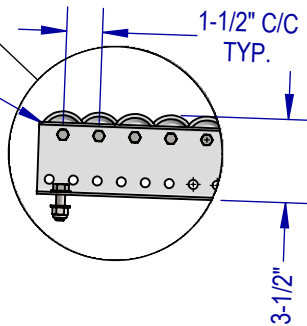
SKATEWHEEL PICKING SYSTEM

LOAD END

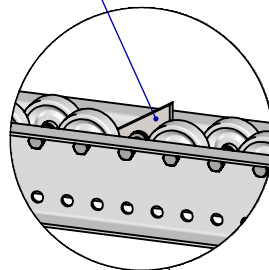
UNLOAD END



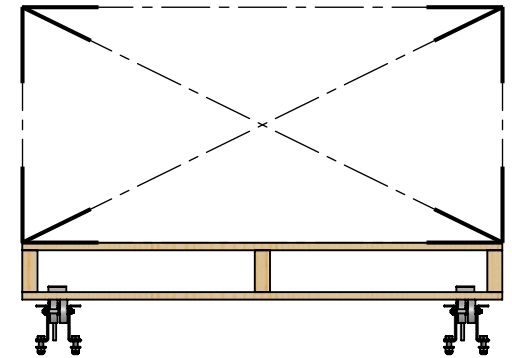
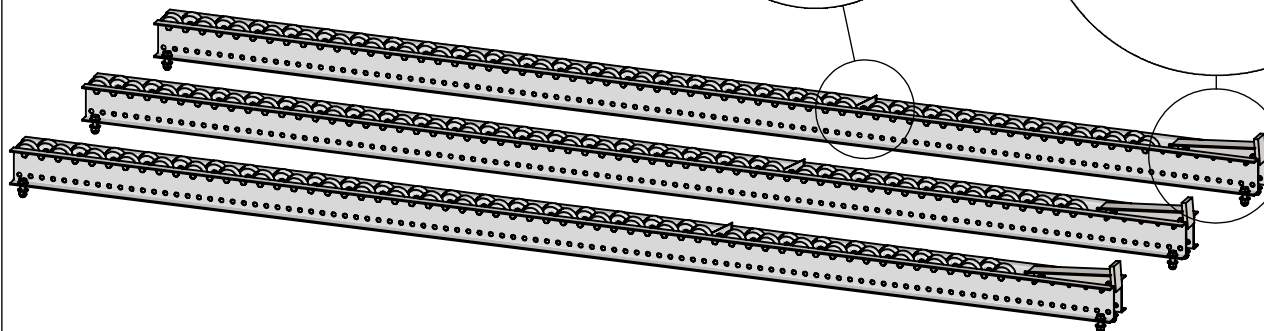
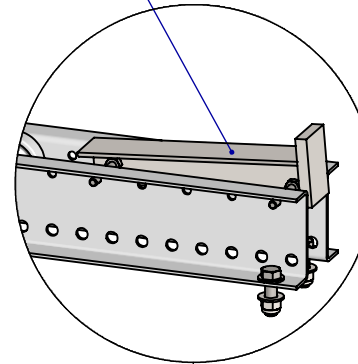
Ø 1.9"
SKATEWHEEL
(150 LBS RATING)



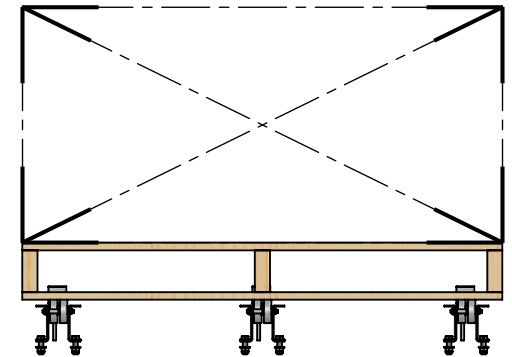
ANTI-ROLLBACK DEVICE
(STANDARD EQUIPMENT)



PALLET STOP
(STANDARD EQUIPMENT)



TYPICAL CONFIGURATION WITH
TWO DOUBLE STAGGERED RUNS



CONFIGURATION WITH
THREE DOUBLE STAGGERED RUNS -
FOR HEAVIER PALLETS

DRAWING No.: SKATEWHEEL TRACKS - FEATURES & BENEFITS	
DATE: APRIL 26, 2017	
DRAWN BY: A.F.	SCALE: N.T.S.

3D
STORAGE
SYSTEMS
LIMITED

270 HARRY WALKER PARKWAY N.
NEWMARKET, ONTARIO, CANADA
L3Y 7B4
PHONE: 1.905.830.0003
www.3dstoragesystems.com

THIS DRAWING IS THE PROPERTY OF 3D STORAGE SYSTEMS LIMITED AND IS NOT TO BE REPRODUCED IN ANY FORM WITHOUT WRITTEN CONSENT.